

GE Healthcare

LOGIQ S7



Amazing **versatility.**



Leading with ve

- > With the growing use of ultrasound, healthcare providers are challenged to image patients of **various ages and sizes**, and encompass **a wide range of clinical areas** including abdominal, vascular, cardiac, musculoskeletal, OB/GYN, and small parts imaging.

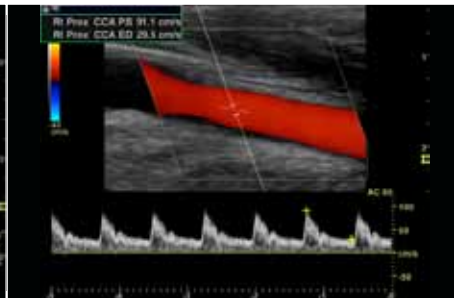
It takes a special ultrasound system to help meet those demands – and the LOGIQ* S7¹ system is equipped for the challenge. This mobile, shared-service ultrasound system is designed specifically to provide:

- Consistent quality performance to help enhance diagnostic confidence across applications
- User-sensitive design to help increase exam speed, as well as comfort and productivity
- Intuitive tools to enable high utilization across multiple applications
- All at an affordable price that helps meet expectations

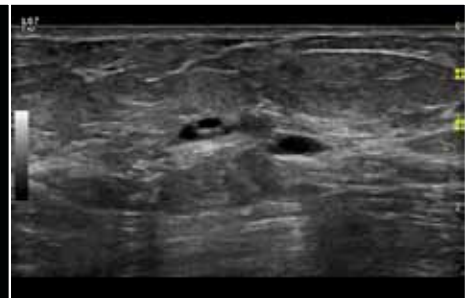
LOGIQ S7 is well equipped for a variety of applications and ready to take on both routine and non-traditional challenges.



Contrast resolution of liver with the C1-5-D.



Common carotid artery Doppler with the 9L-D.



Definition of multiple breast cysts with the matrix array probe, ML6-15.

rsatility

➤ Sensational performance

LOGIQ S7 is engineered to provide quality and speed across applications.

- **S-Agile architecture** – Advanced LOGIQ architecture helps deliver consistently clear images with minimal keystrokes.
- **Advanced transducers** – Powerful LOGIQ E-Series transducer technology enables excellent images to be acquired quickly.
- **Image optimization tools** – LOGIQ S7 is packed full of tools to help enhance image quality such as contrast resolution and border definition.

➤ Smart design

The LOGIQ S7 user centric design can help reduce operator fatigue and risk of injury, while enhancing comfort.

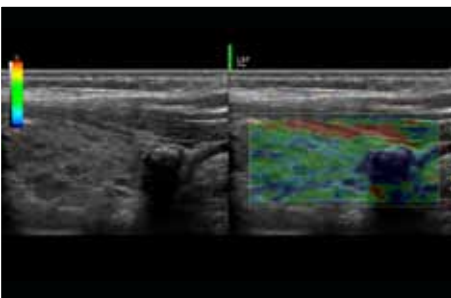
- **System adjustability** – LOGIQ S7 can be modified according to operator height and preference: the control panel swivels and moves up/down² independently from the monitor for easy positioning, and the 19" LCD monitor on an articulated arm³ helps users attain an excellent viewing angle.
- **Intuitive interface** – User-friendly keys, backlit controls and smart keys help promote peak performance. The 7" user-selectable touchscreen helps facilitate uninterrupted scanning.
- **Scan Assistant** – This customizable scanning program helps decrease keystrokes, shorten exam time and increase exam consistency.⁴

➤ Specialized capabilities

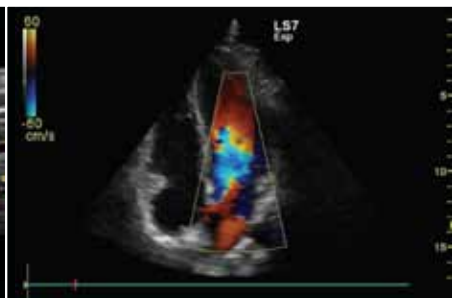
Beyond its ability to scan a wide variety of body types, the LOGIQ S7 offers tools that help provide additional exam information, as well as enhance productivity and diagnostic confidence. Dedicated packages help clinicians perform efficient, specialized exams.

- **Advanced tools** help provide innovative, in-depth care.
 - **Specialized features** include B-Flow, Elastography with semi-Quantification,⁵ Flow Quantification, Contrast Imaging, B-Steer+, Volume Imaging and Multi-Modality Imaging Display.
 - **Specialized transducers** include convex, linear, phased array, matrix array and 3D/4D volume convex.
- **Raw Data** – This feature captures data early in the image processing chain which affords clinicians the freedom to perform image adjustments, measurements, and other functions after the exam is completed.

➤ **A true workhorse.** Its sleek, lightweight design incorporates powerful technologies while enhancing workflow and user experience.



Thyroid Elastography using the 11L-D. Elastography is available on linear and curved transducers.



Apical four chamber view of the heart with the 3Sp-D.



Detail in this rendered fetal face using the RAB4-8-D to help enhance diagnostic confidence.